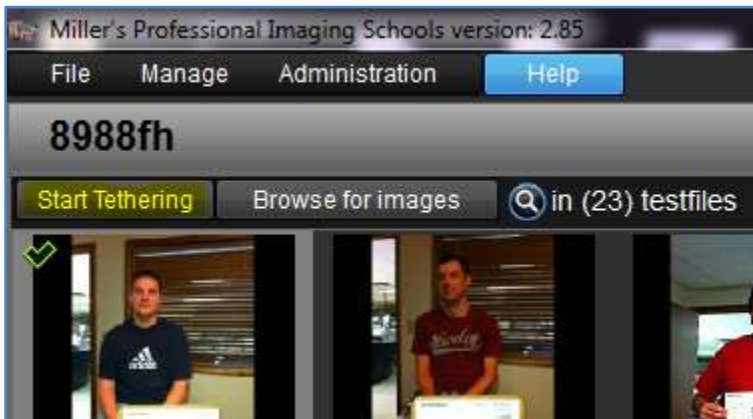
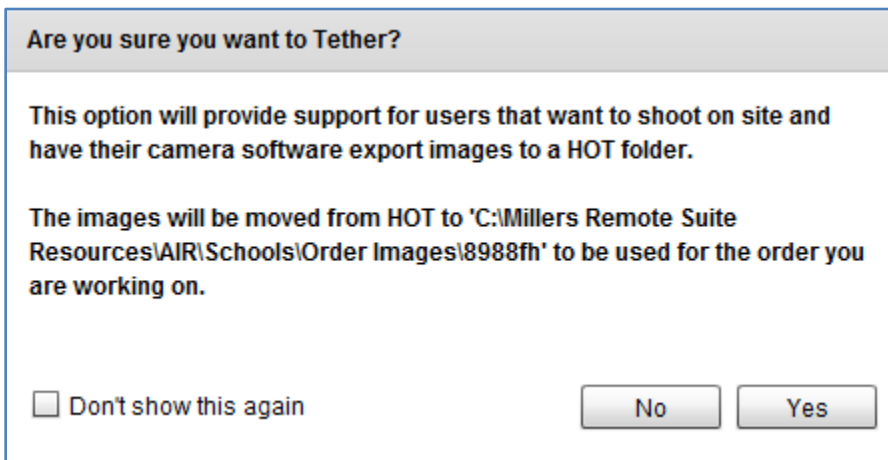


To utilize the tethering option in the software you must use your camera tethering software, (Canon EOS Utility, Nikon Camera Control Pro 2, Sony's Camera Remote Control, Adobe Lightroom, DIY Photobits, or whichever other software you wish to use) to place your images into a hot folder which our software can be set to monitor. This will cause the images to automatically show up in the light table, allowing you to do on site entry.

1. The first step is setting up your hot folder. This can be set up anywhere on your computer, the only requirements are that it be devoid of any other files and that both your camera tethering software and our software be pointing to the same folder.
2. On the build screen in our software (upper left hand corner) click "Start Tethering".

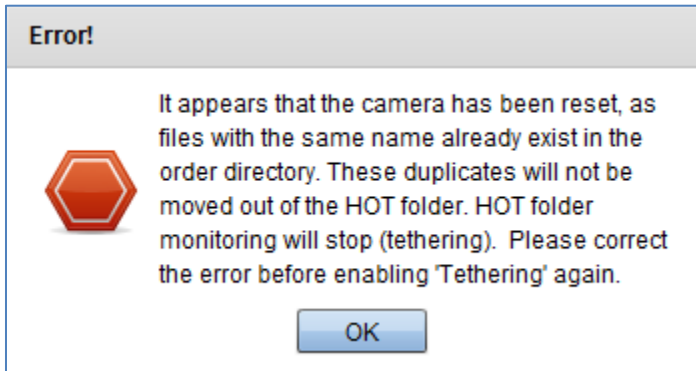


3. The message shown below will pop up. Please note that there is an explanation of where your images will be moved to once our software processes them. This will be different for each order.



4. When you click "Yes" you will be prompted to select your hot folder. Select the folder that you created in step one.
5. At this point, when your camera tethering software dumps an image into the hot folder, it will appear in the light table and the image will be moved from your hot folder to the final location.

**Be sure that your camera is not set to reset file numbering when your battery or memory card is removed. This could cause duplicate image names which will result in the following error in our software:



To resolve this issue, open the hot folder and give the file a unique name. You can then restart the tethering option in our software. You will also need to set your camera to start giving unique names again. An easy way to do this is to reset the image prefix (if it was DSC, change it to IMG or something like that). Please refer to your camera manual for details on how to change these settings.